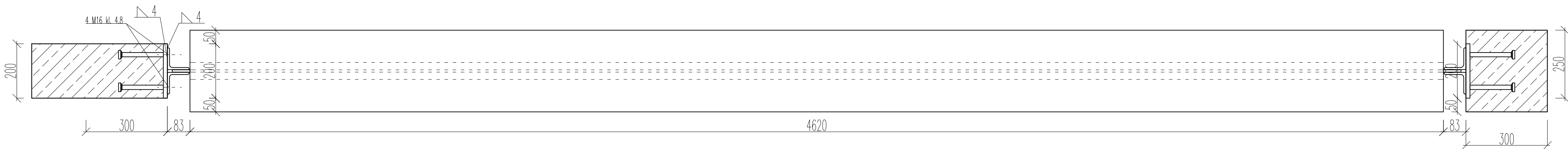
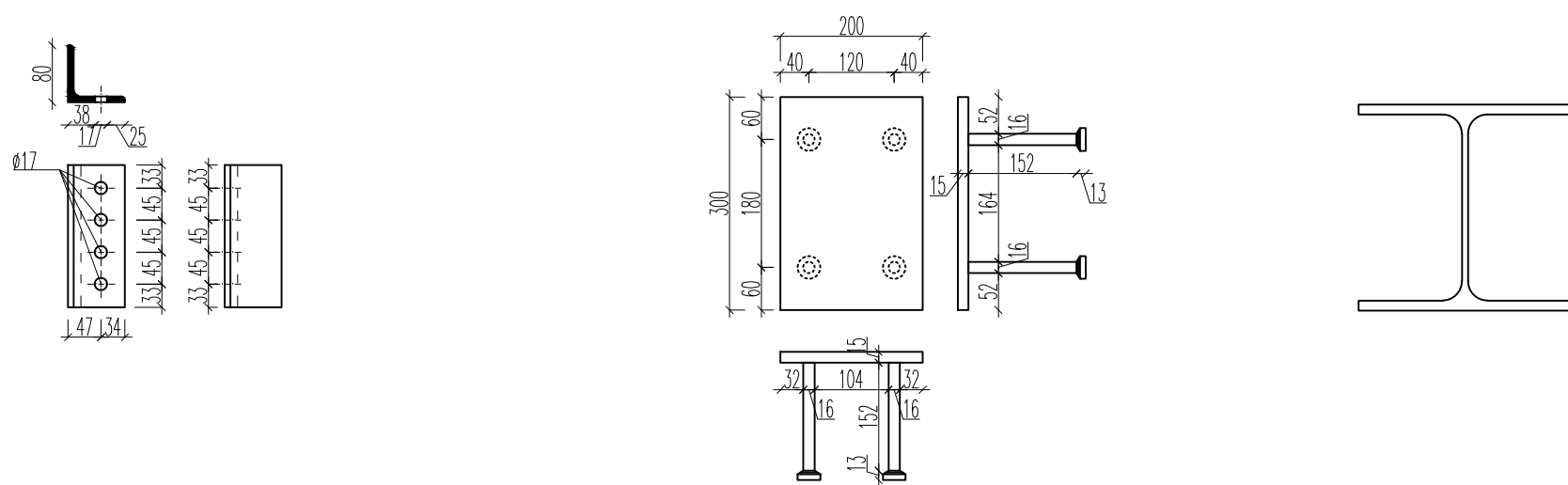


Technical drawing of a HEA 300 beam, showing three views: elevation, side, and end view.

Elevation View (Top): Shows the beam with a total length of 4620 mm. The height is 300 mm. The flange width is 180 mm. The web thickness is 10 mm. The flange thickness is 18 mm. The drawing includes dimensions for the flange and web, and a note "4 M16 kl. 4.8" indicating the bolt specification.

Side View (Middle): Shows the beam with a total length of 4620 mm. The height is 300 mm. The flange width is 180 mm. The web thickness is 10 mm. The flange thickness is 18 mm. The drawing includes dimensions for the flange and web, and a note "4 M16 kl. 4.8" indicating the bolt specification.

End View (Bottom): Shows the beam with a total length of 4620 mm. The height is 300 mm. The flange width is 180 mm. The web thickness is 10 mm. The flange thickness is 18 mm. The drawing includes dimensions for the flange and web, and a note "4 M16 kl. 4.8" indicating the bolt specification.



NR.RYSUNKU:	REWIZJA:
PAS-116-PW-K-ST-PD-D-06	